

哈尔滨工业大学

研究生院

2017年9月

.....	3
.....	6
.....	12
.....	16
.....	19
.....	25
.....	28
.....	35
.....	38
.....	45
.....	48
.....	49
.....	51
.....	52
.....	55
.....	58
.....	60
.....	61
.....	64
.....	66
.....	70
.....	77
.....	78
.....	80
.....	87

.....	92
.....	93
.....	97
.....	100
.....	106
.....	107
.....	117
.....	125
.....	127
.....	128
.....	135
.....	139
.....	149
.....	151
.....	155
.....	158
.....	161
.....	164
.....	169
.....	173
.....	175
.....	178
.....	183
.....	185
.....	187
.....	193
.....	196
.....	198

(1980年2月12日第五届全国人民代表大会常务委员会第十三次会议通过)

(1981年5月20日国务院批准实施)

1

2

3

1

2

3

8

1
2
3
4
5
6
7
8
9

能力

变相

其它

教师

情况

5

3

30

5

5

22

2-4

- 1
- 2
- 3
- 4
- 5

- 1
- 2

- 1.
- 2.
- 3.
- 4.

3

- 1.
- 2.
- 3.
- 4.
- 5.

- 1.
- 2.
- 3.
- 4.

5.

1.

1

2

3

4

2.

1

2

3.

4.

1

1

2

3

5

3

7

3

10

6 12

30

10

33

2017 9 1

41

()

() 15

30

()

()

()

()

()

()

()

()

()

()

()

()

()

()

()

()

()

()

()

()

()

()

6

()

1-4

12

()

5-7

2017 9 1

2010 412

()

()

()

()

()

5

7

10

30

39

6

/

15

2017 9 1

42

1

2

3

4

5

		2	36
		2	64
		2	32
		4	64
		1	
		1	
		1	
		1	
	14		

1

2

3

4

3 5

5

1

3

6

7

8

9

1

2

3



37

7

12

10

3

4

		3	48
			4
		2	64
		2	32
		4 6	64 96
		4 6	64 96
		2	32
		6 8	96 128
		4	64
		3 6	48 96
		1	/
		1	
		1	
		1	
		37	

1

2

4

50

2013 51
2015 45

1

2

3

4

2

5

6

7

8

9

1
2

4

52

3
4
2
1
2
3
3
1

4
2

1
1
2

2

2

5000

3

6

4

2

5

3-5

6

5000

90
25% 25%

60

1/3

0

55

0

2017

57

()

1 70
2 80 () 2
3 6.5 2
4 1800 () 1200 255 5

5 650 5
6 (5) 2
7 6 550 3
8
9
10

1 80 () 2
2 6.5 2
3 1800 () 1200 255

5

4 650 5
5 (5) 2
6 550 3
7
8
9

/

1

1

2

3

4

2

1

2

1

3

10-20%

3

1

2

3

4

5

5 7

3

1
2
3
4
5
6
7
8
9

1

2
3

50

4
30

1.5

1

2

3

62

4

5

1

1

1

2

3-5

3

4

1

2

3

4

1

2

1

3

3

64

1 " " " " " " 1
" " " "

1

2

66

3

" " " "

4

5

" "

" "

6

1-6

7

8

9

1

2

3

4

5

6

68

2006 13

/

/

/

1

2

3

70

4

5

6

1

2

3

35

,

4

5

6

18

7

8

9

10

3

1

10

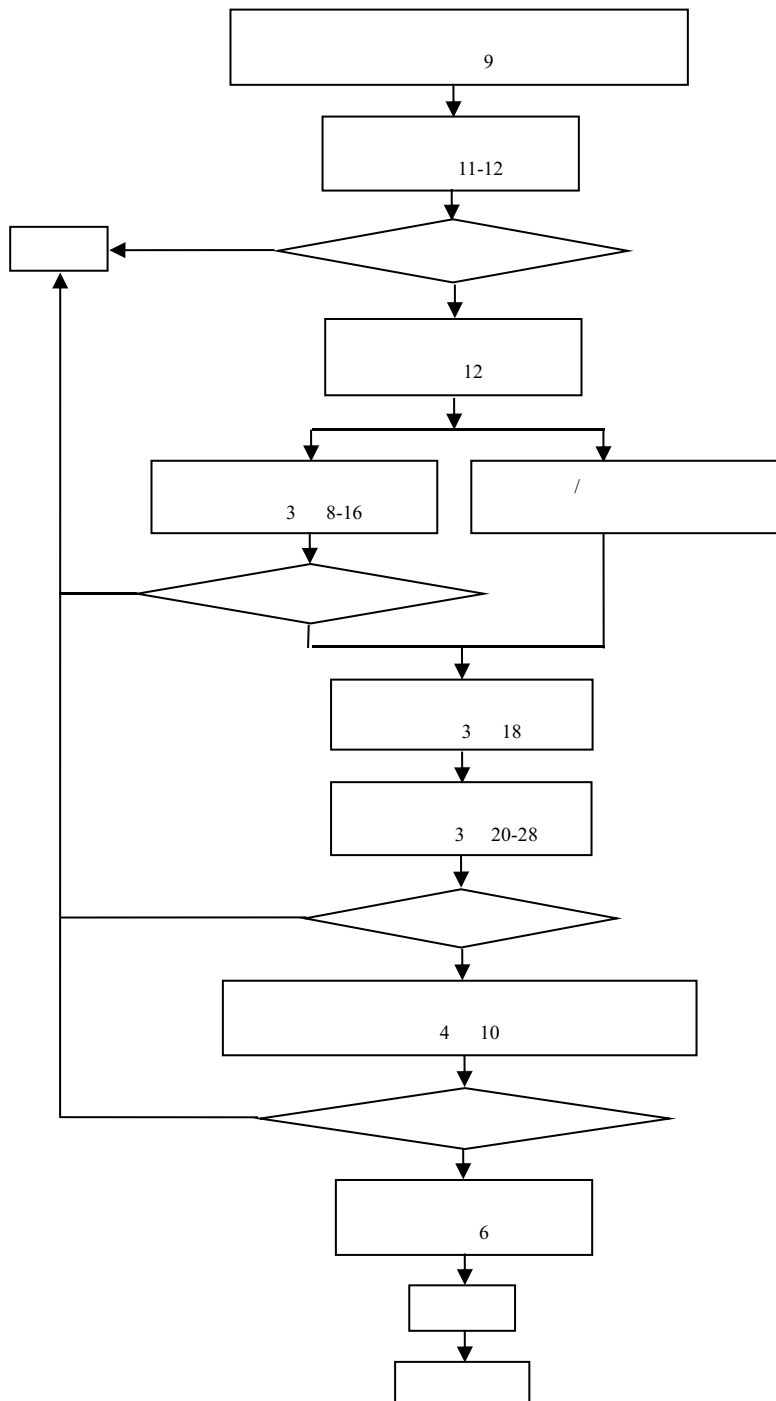
2

3

1

2

3



1

2

3

2

1

2

3

200

4

5

6

/ /

80

1

2

3

4

5

6

7

3-12

8

3

1

2

8000

4000

2012 126

3

6

6

3

3

81

4 60
20 40

1 6 10

2

3

4

5

1

2

3

4

5

5

6

1

5

- 1
- 2
- 3
- 4

5

6

1

1

2

3

4

2

1

2

3

1

2

2

3

1

2

3

4

1

7

$\frac{2}{3}$

5

2

3

2 3

1

2

40 50

3

4

5

6

7

4

1

2

3

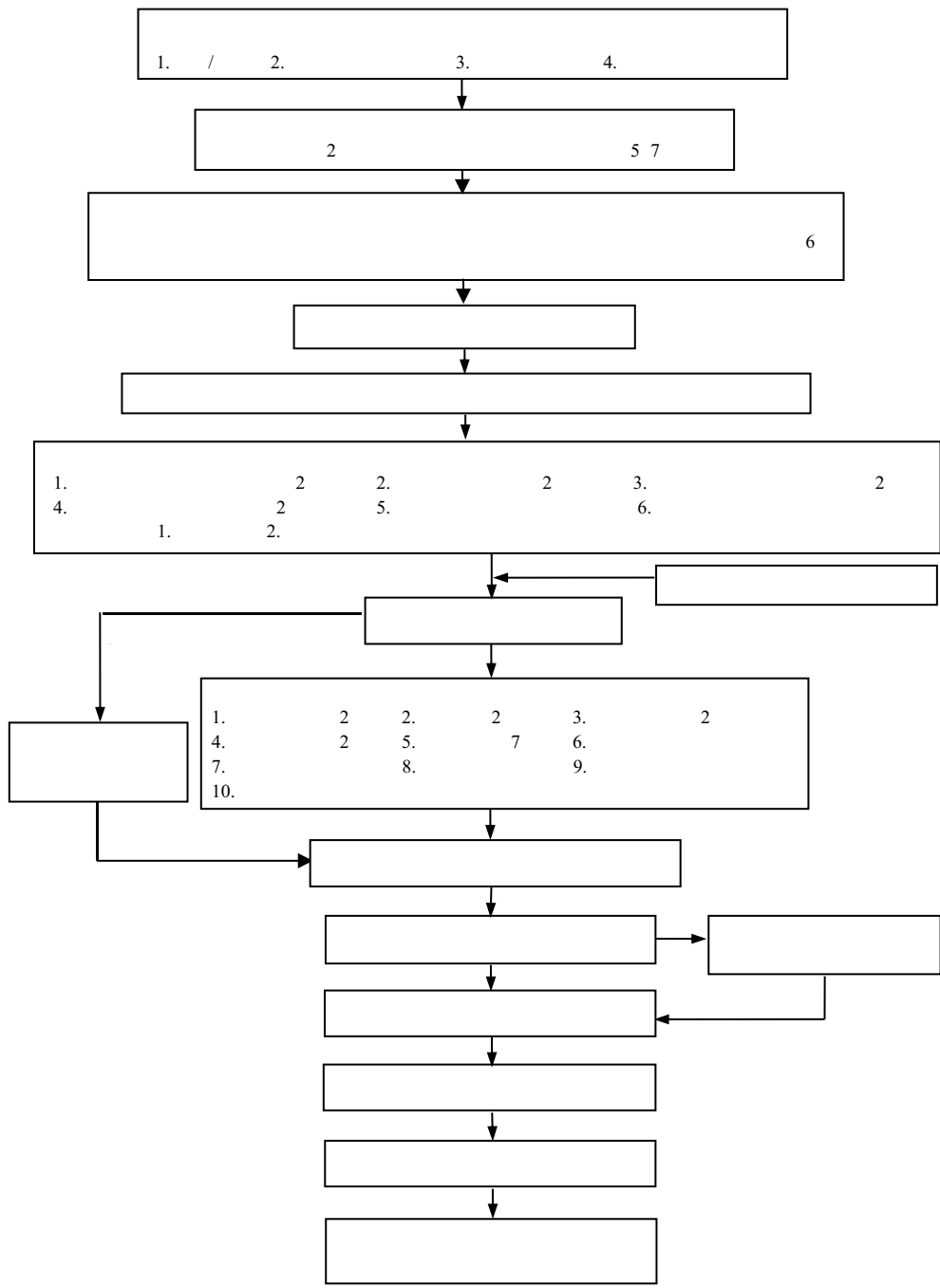
4

1

2

3

8



1

1

10213

10213 081202

2

1

10213

3

4

980 :// . . . / /1 / 3426 109341/ .

5

2

1

1

2

2

3

2

4

3

4

1

5

6

7

:// . . . / /1 / 3426 109341/ .

980

8

1

9

2

10

1

11

3

6

328

4.

2

1

2

2

2

3

2

4

2

5

1

6

1

1

4

1 7

4 10

1

2

1

2

3

5

3

6

4

5

5

1

2

1

2 (,) (,) (,)

1

1

4

2

2

1

4

3 (,) (,)

2

3

2

4 (,) (,)

6

5 (,) (,)

1

1

1

2

2

2 5

2

100

1

30%

2

15

1

1 1

2 2

2

1 1

2 3 4

3

4

1 1

6

4

1

5

10.0

3.0

2

6.5 3 6

5

102

	1			6
	2		15	
5				
	3	20		
6				
				6.0
		3.0		
7				
	1		3	1
	2		2	
	3		2	
	2			
8				
	1	4.0	1	1
2		2		
	2			
	1			
		1.498	1.498	1.0
		0.5		
	2		1.0	/
		2.0		
		&		
9				

1
2
2 3.0

1
2 2 1
3
10

1 4 1 4.0
2 3 1 5.0
11

1 3
7 20
2 3
20

12

1
2 2.0

13 4 1 4.0

14

1

2

/

3

/

0.5

1

27

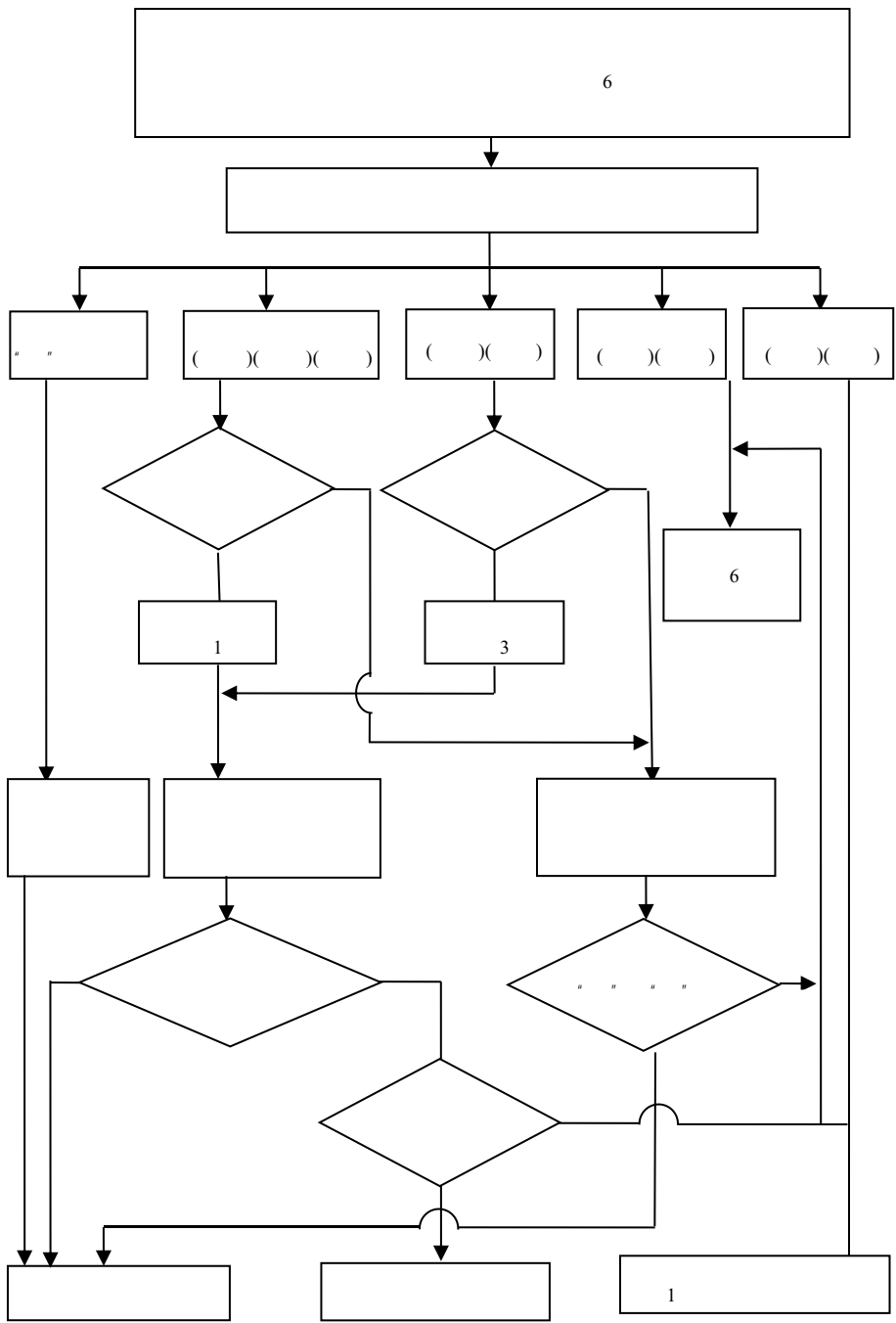
2

/

1

586

2



1

2006

2014

2

4.0

4

4.0

4

4

2

2

2016 9

3

1 3

1

1

2 2

1

1

3 2

1

1

1

4 2012 2

4

3

1 1

5.0

2 2

3 3

3

2015 3 1

5

1 1-1

2 1-1

1-2

3 1-3

1-2

3 1 1

1 2

2010 2010

6

1

3

3

2

4.5

4.5

2

~z'`

3

9

1

2.0

2

3

4

2016 3

1

2

2016 3

1

2

2.0

2016 3

10

1

3

1

2

2

3

1

1

1

3 3 1
1 3 1 ,
4 3
1
2015
11 3 1 1
2
2014 9
12 1 1
2 2
1 1 2
1 1
2 1
1
2017 3
13 3 1 &
14
1 1 0.6
2 2

3

1

1

1

2

1

1

2 1

1

1

2011

15

1

2

2

1

2

3

1

1

1

2

2014

16

3

1

1 1 1.5
2 2 1 0.5
3 1 2
4 1
5 1

3

3

1

4

1

2016

17

1

3

1

1

2

1

2

3

2

5

4

2015

18

1

4

2

3

19

1

1

2

2

3

1

1

2

4

3

2014

20

1 + 1
+ 2 / 1
1 2 1
2 1 2
3 / 2
4 / 1
1
5 / 1
2
6
1 2
7 / 1
/ 2 1
1

1

()

()

2

21

1

()

3.0

2

3 3

2 1

1 ()

2009 7

1-1 4 :// . . . /

1-1 4

1

1

1

1

2

1

2

:

9

7

()

3

2

3

1

1

1

2

2016

2015

2

1

1

2

1

9 ,

7

:

3

2

1

1

973 863

1

2015

2016

3

1

1

2

9

7

()

3

2

3

1

1

1

2

2015

4

1

1

2

9

7

()

3

2

3

2

1

1

2

3

2015

5

1

1

:

2

9

7

()

3

2

					3
	1				
			1	1	2
6					
	1				
	2		1		
		9		7	()
	3		2		
					3
	1				
			1	1	2
7					
	1		2		1
	2				
		9		7	
	5		3		
					3
	1				
		1		3	1
					1
2					
					5

3

1

1

2

1

1

1

4

1

2015

10

1

1

2

2

3

1

1

3

2

()

5

3

11

122

1 2 1
2
() 9 7
3 3 2
3 1
1 1 2

1

1
2

3

4 1 1

12

1

1 1
9 6 ()

2 3 2 1 3
2 1 1 3

1
3 2
1 2 1
13

:// . . . / .

1

1,2

2

()

1.

1

2

2.

1

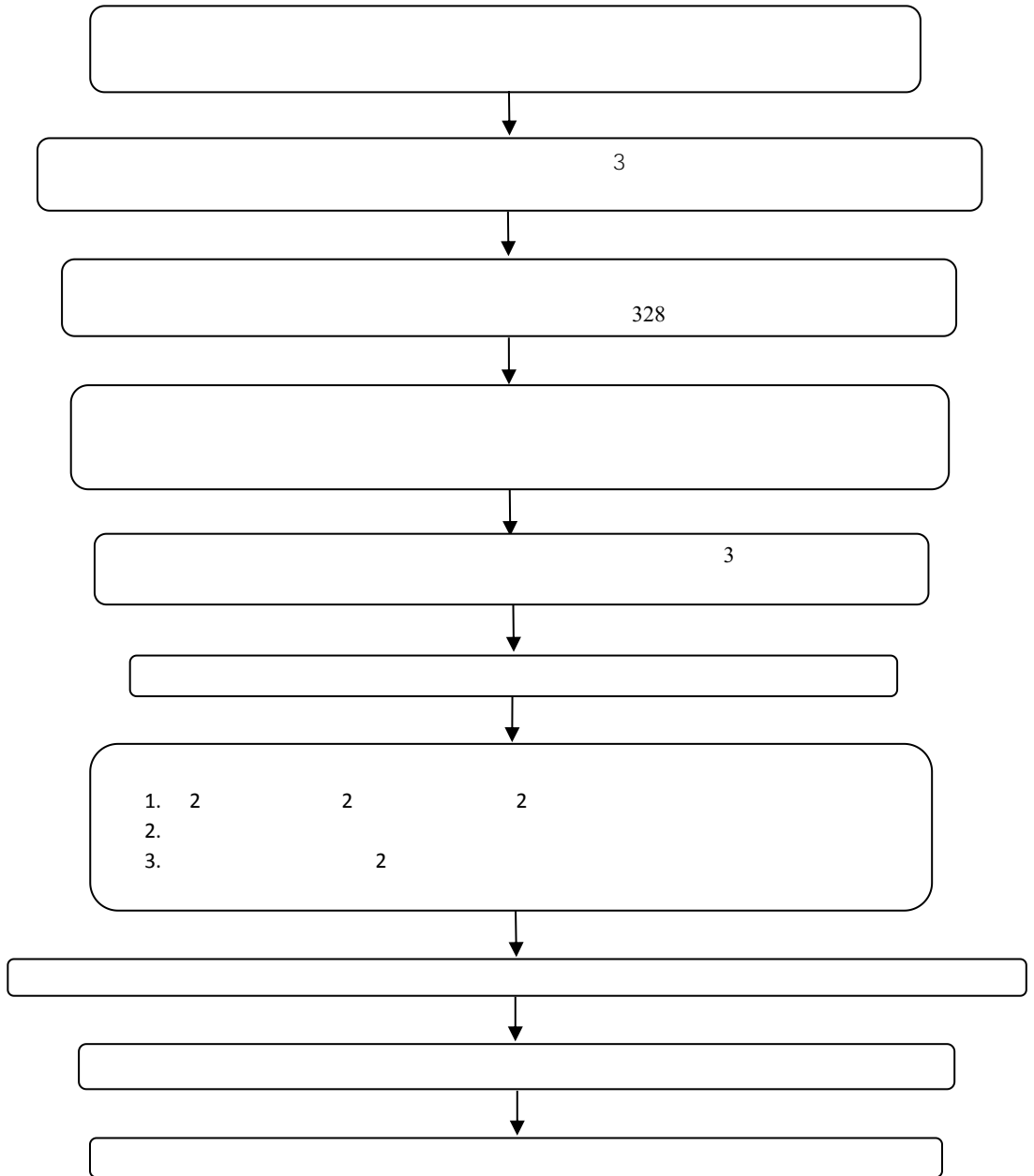
2

3

4

,

2012 123
2012 27



/

1/3

0.5-1

142

5 5 2 3 4
6 3 7
5 6

,

2017 9

2014 359

,

()

12

2000

2013

2013

150

2013 19

2017 5

2017 165

2017 404

1.

2.

3.

4.

2017

"

"

1.

1

16000 /

13000 /

8000 /

40% 40% 20%

1

/ .

	40%	16000	6000	10000
	40%	13000	6000	7000
	20%	8000	6000	2000

2.

2

4.3 /

17.2

2

/

	A			B		
1-3	2.7	1.0	0.6	2.3	1.0	1.0
4	2.7	1.0	0.6	2.7	1.0	0.6
	10.8	4.0	2.4	9.6	4.0	3.6
	17.2			17.2		

	2			/		
						+
1-3	1.7	1.0	1.6	2.7	1.0	0.2+0.4
4	2.7	1.0	0.6	2.7	1.0	0.2+0.4
	7.8	4.0	5.4	10.8	4.0	0.8+1.6
	17.2			17.2		

" "

1.

A B C A

12.5 15 B 10

12 C 7.5 9

A 500 B 400 C

300

2.

7

" "

400 / " " 300 /

300 / 200 /

3.

30000

20000

1

2

3

4

5

6

7

8

9

2016

10

8000

/ .

10000 / .

1
2
12.5 15 10
12 7.5 9
1 50
1
2

500

300

1

2

3

4

3-5

5

1

1

2

3

2

3

4

400

300

10

1

2

3

7

4

1

2

3

4

5

6

1

2

3

2

4

5

6

1

300 /

400 /

30%

2

200 /

300 /

150 /

3

200 /

40

4

4000 /

5

4

1

4

6

1

586

2011 44

2009 334

1

1

2

3

4

5

6

7

8

9

166

586

2011 44

	1	6	
			- - -

- 1.
- 2.
- 3.
- 4.

1 6 10
1

:// . . . 3
12:00
15:00
3 0

1
9:00-16:00

2

3

1

2

1
2
3
4

20

1
2

15%

10%

3

4

30

5

5000

6

6 7

7

7 8

7

1

2

1

2

9 30

4

9 30

175

3

3

2

5%

1

2

3

30%

1.2

5

5

1

2

3

1

2

1

1

2

3

4

5

75

80

6
2 90%

1
2 75
3 85
4 80%
5

6 90%
5
3
4

1
2 80
3 85
4 90%
5

1
2 82
6

1
2 78
3 85
4

7
1
2 80
8

1
2
3
4
9
1
2

3

10

1				10%	
2				10%	
3				4%	
4				10%	
5				3%	0.5%

2.5% 1%

6

1

7

10%

8

20%

9

1 1000

2 1

20 10

10

11

1

2

3

4

1

2

2016 10

97

95

98

2016 2017

2017 3 28

2016-2017

2003

71

1

2

3

1

1%

185

1 4
 2
 1 2
 3
 3
 4 11 24 17 00
 1 2 3 2
 126. +
 +
 312
 1
 2
 3 40 20
 4
 5 10
 5%

11 7 -11 24	
11 25 -11 30	
12 1 -12 8	
12	

2016 11 8
 2016 *

1

2

3

4

5

1

10%

2

4 10 -4 13	
4 14 -4 23	
4 24	
4 25 -4 28	
5 2 -5 10	

7

1

2

3

4

1

(:// . . . / = & =)

2

3

0451-86415867

. . .

2017 4 10

2017

. äc

- 1.
- 2.
- 3.

/ /

/

- (1)
- (2)
- (3)

1

/

/

/

/

2

/

/

328	86413071 86418305
327	86413871 86403286
326	86403047 86403220
319	86403087 86413771
318	86416419 86402619
317	86413971 86418112
301	86416113 86414004 86415167
332	86403584 86403213

	86413099
	86413062
	86413095
	86414890
	86414665 86413266
	86416334
	86412114

	04	86413406	86415152
	18	86413406	86415152
	21	86413406	86415152
	05	86413409	86403822
	08	86413811	86413809
	09	86412943	86415970
	02	86413209	86413208
	01	86415857	86418534
	06	86402470	86418534
	11	86414109	86416949
	12	86414208	86416949
	10	86414016 86412748	86403466
	16	86414622	86416407
	26	86418352	86418375
	33	86282073	86289192
	29	86283006	86283073
	34	86281132	86281145
	32	86282116	86282835
	03	86413309	86413370

	25	86413708 86413707	86403379
	15	86414509	86412669
	24	86413867	86413867
	28	86416944	86403827